

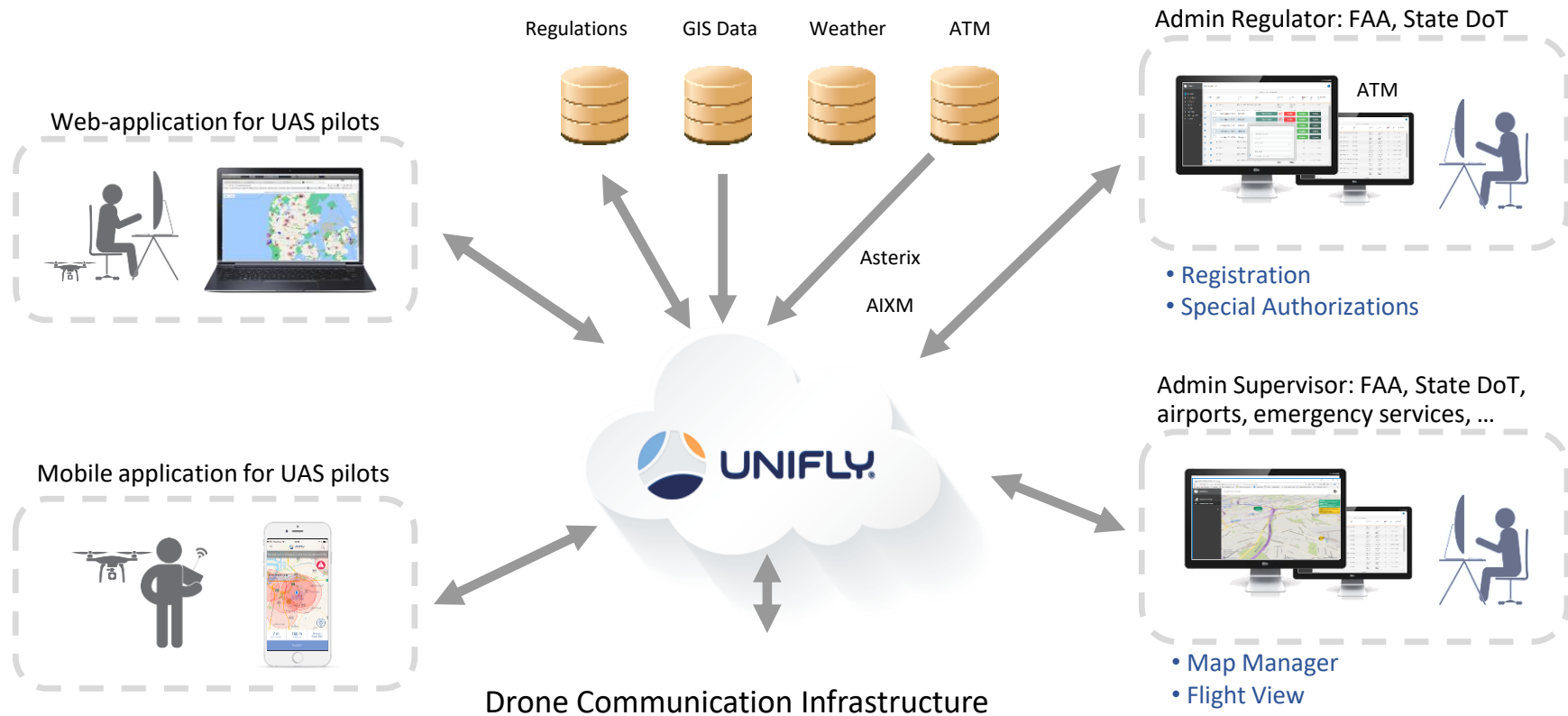
ICAO Drone Enable 2019



The future
of unmanned traffic
management,
applied today.



Today's UTM Solution





Search for locations...

Example: Frankfurt, Germany

0x2d0077d
G1275.98 ft





Search for locations...

Latest refresh: 04/11/2019 13:13:00



Map layers

- **Current operations**
- Prisons
- Power plants
- Federal and state authorities
- Embassy
- Police
- Hospitals
- Industrial sites
- Sensitive fauna
- Military area's
- Populated areas
- Administrative boundary
- Public/military airport
- Control zones
- Radio mandatory zones
- Danger areas
- Restricted areas

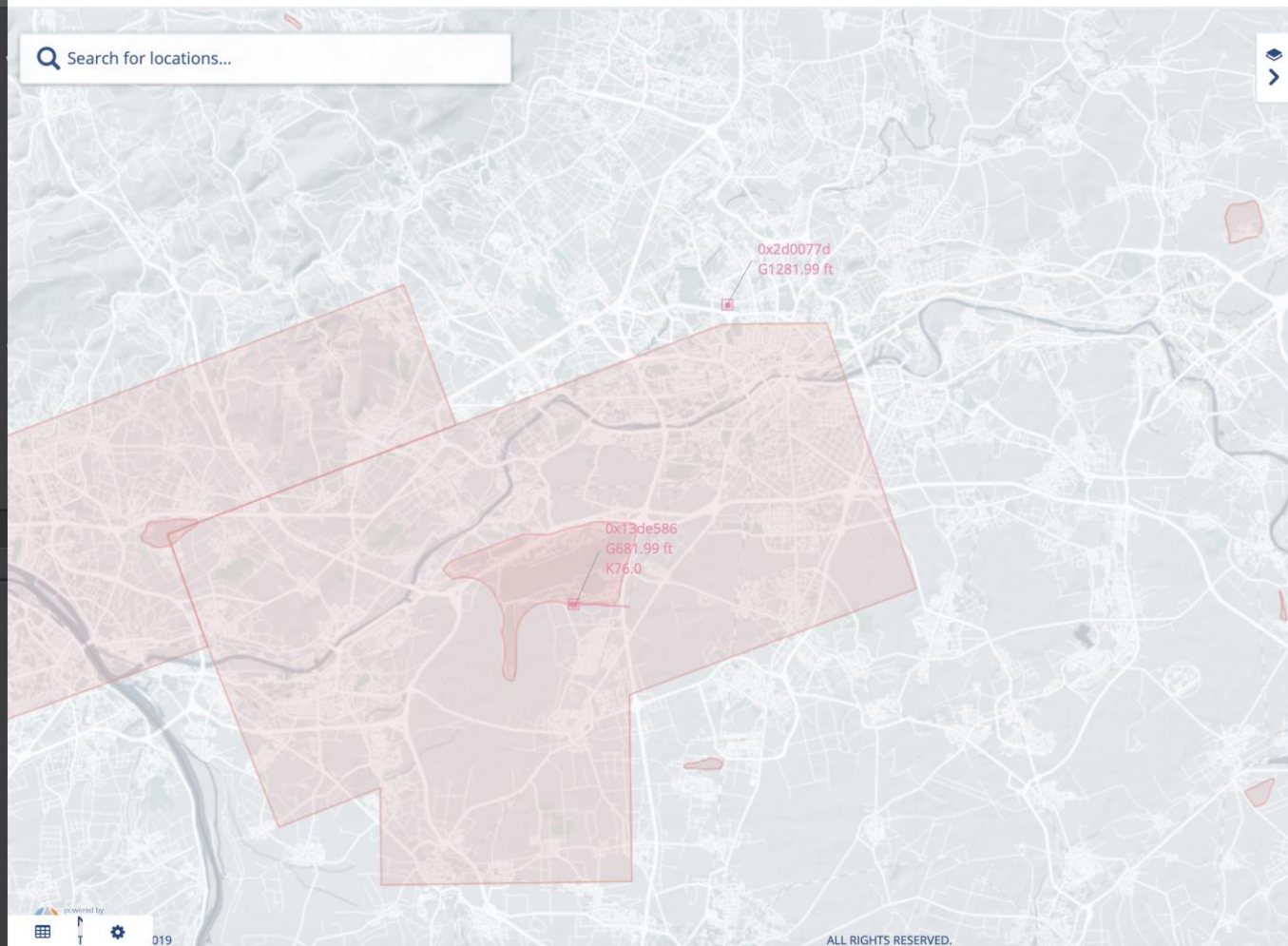
0x2d0077d
G1279.00 ft





Latest refresh: 04/11/2019 13:13:00

Search for locations...



Map layers

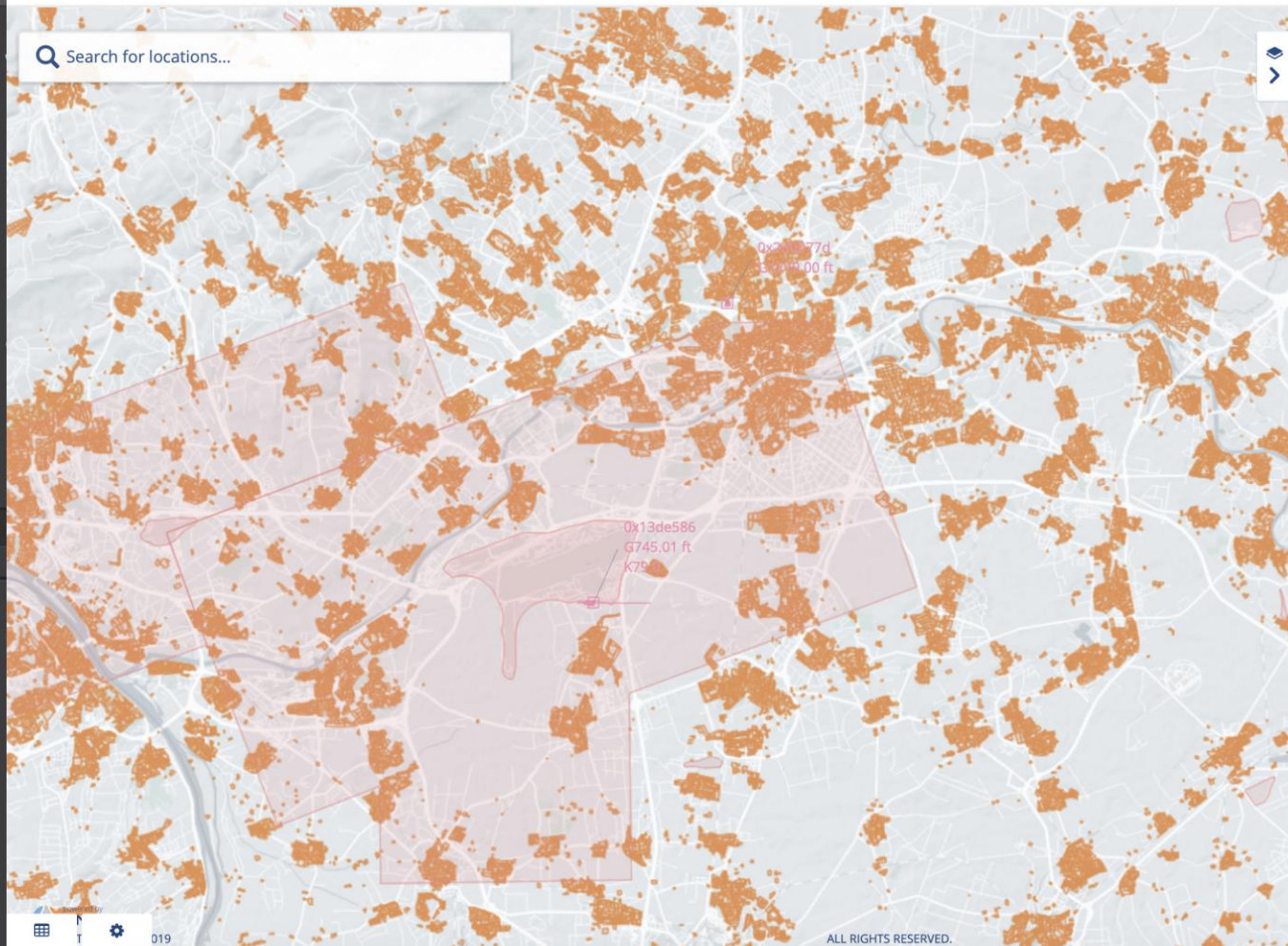
- Current operations**
- Prisons
- Power plants
- Federal and state authorities
- Embassy
- Police
- Hospitals
- Industrial sites
- Sensitive fauna
- Military area's
- Populated areas
- Administrative boundary
- Public/military airport**
- Control zones**
- Radio mandatory zones
- Danger areas
- Restricted areas





Latest refresh: 04/11/2019 13:13:00

Search for locations...



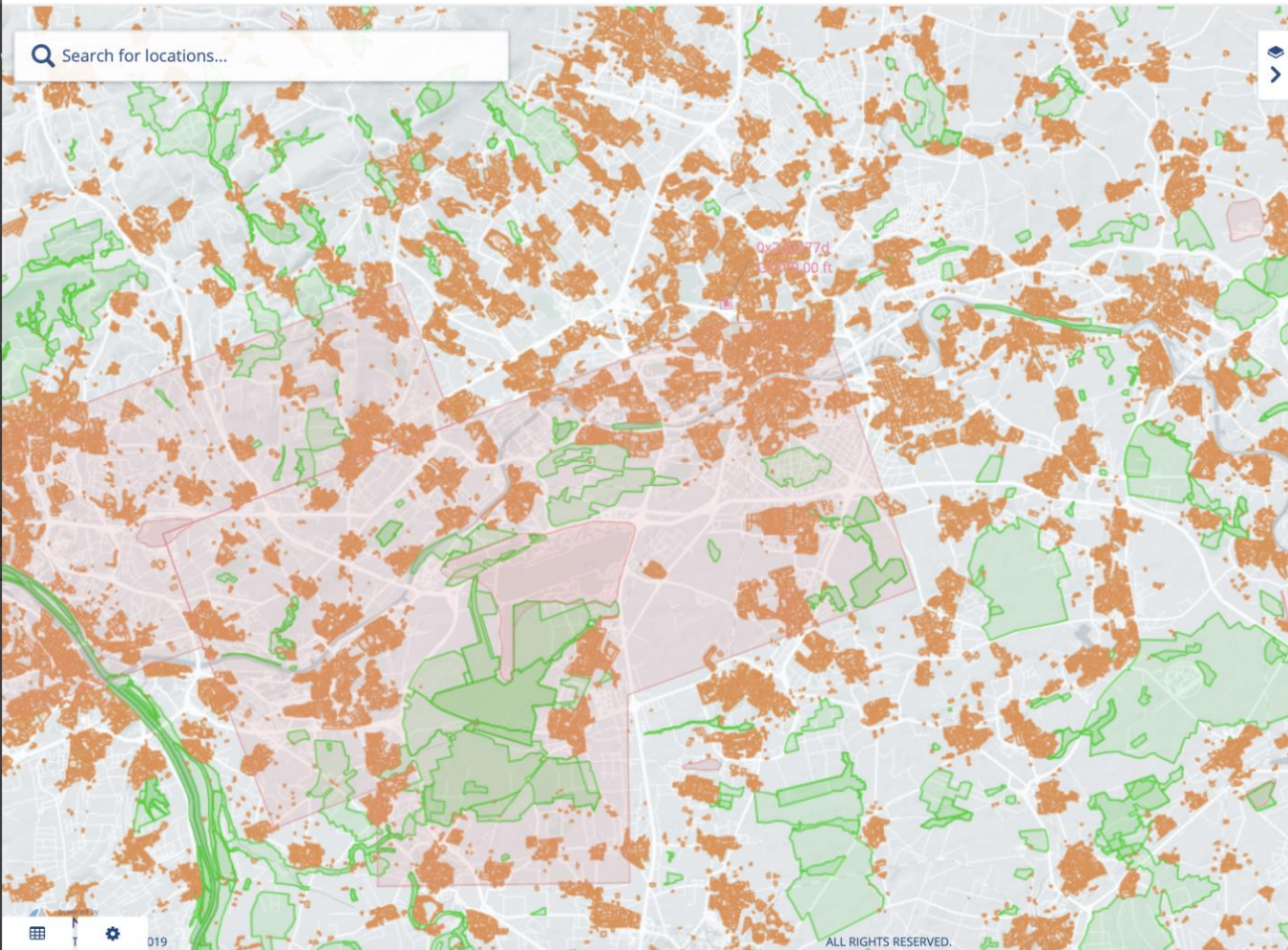
Map layers

- Current operations**
- Prisons
- Power plants
- Federal and state authorities
- Embassy
- Police
- Hospitals
- Industrial sites
- Sensitive fauna
- Military area's
- Populated areas**
- Administrative boundary
- Public/military airport**
- Control zones**
- Radio mandatory zones
- Danger areas
- Restricted areas



Latest refresh: 04/11/2019 13:13:00

Search for locations...



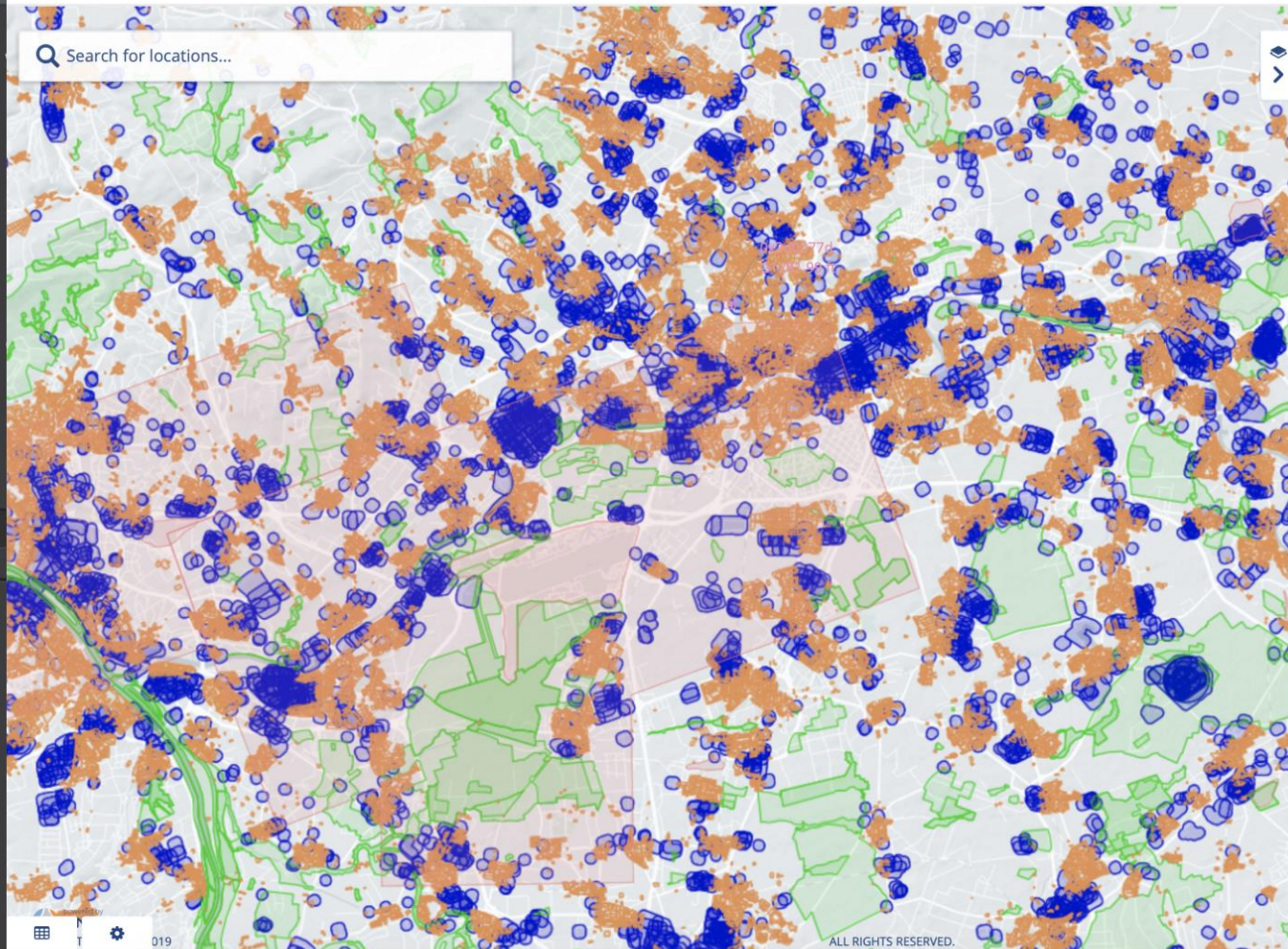
Map layers

- Current operations**
- Prisons
- Power plants
- Federal and state authorities
- Embassy
- Police
- Hospitals
- Industrial sites
- Sensitive fauna**
- Military area's
- Populated areas**
- Administrative boundary
- Public/military airport**
- Control zones**
- Radio mandatory zones
- Danger areas
- Restricted areas



Latest refresh: 04/11/2019 13:13:00

Search for locations...

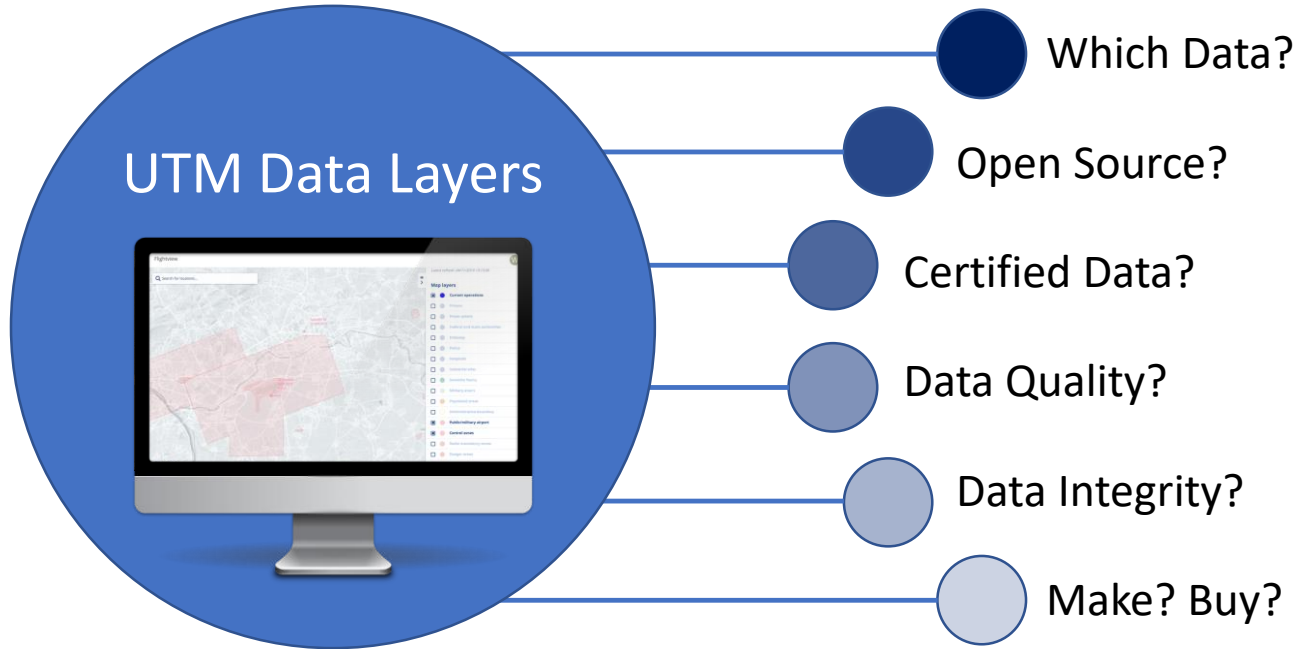


Map layers

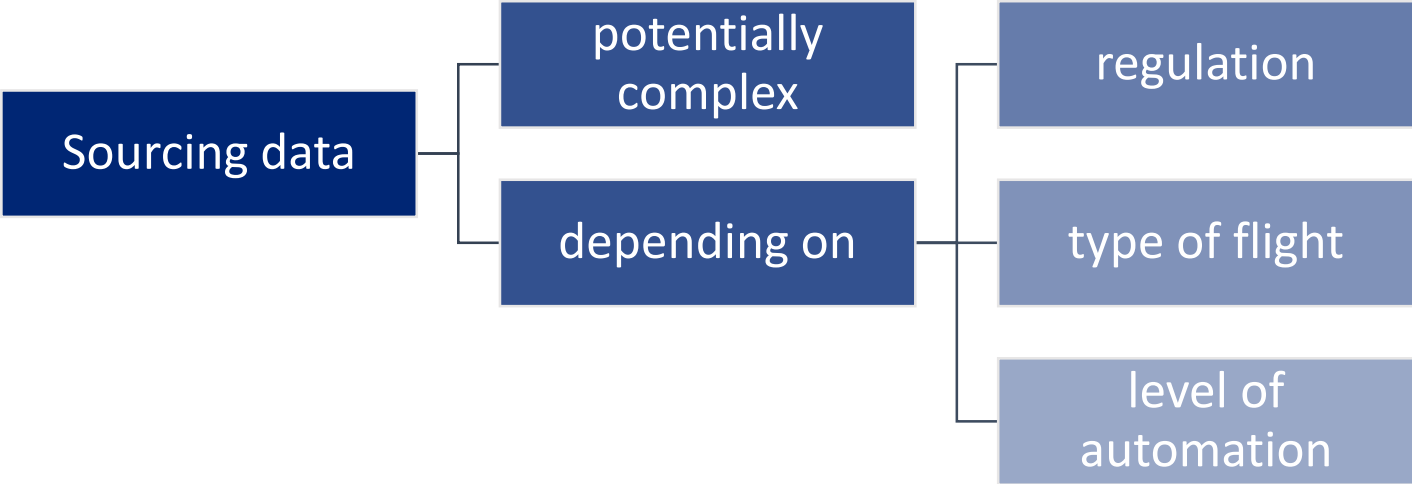
- Current operations**
- Prisons
- Power plants
- Federal and state authorities
- Embassy
- Police
- Hospitals
- Industrial sites
- Sensitive fauna
- Military area's
- Populated areas
- Administrative boundary
- Public/military airport
- Control zones
- Radio mandatory zones
- Danger areas
- Restricted areas



Data Source



Conclusion





Thank you
for your attention.

